



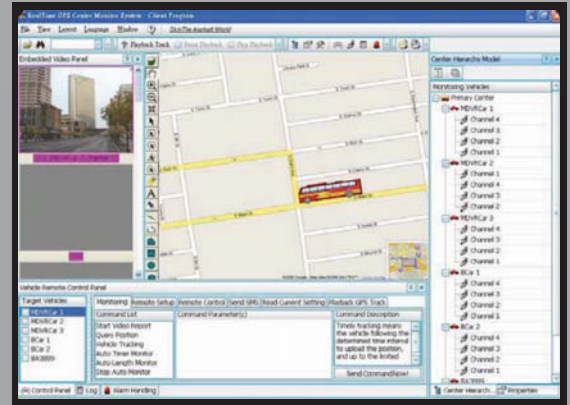
Features

- MPEG-4 Technology for Video Compression
- Compact Flash Card (CFC) for Software Upgrade and Uploading Advertising
- Stand Alone NON-PC Embedded Operating System (RTOS) Provides Maximum Stability
- High Quality MPEG-4 Video Recording and Playback at Full Frame Rate (30FPS based on 60Mbps)
- 8 Channels Video and Audio Recording Simultaneously
- Built-in GPS Allows for Vehicle Tracking and Location Recording in Video Field
- Special Anti-Vibration System
- Station Announcement Automatically

Analysis Software



Central Monitoring System (CMS)



Remote Monitoring Software (RMS)



Specifications

System	OS	Linux (providing standalone stable operation system)	
	Operation Interface	Hand-held, IR controller with on-screen display for all operation of the MDR	
	Storage	60, 80, 120 and 160GB (2.5" mobile anti-vibration and shock resistance HDD support)	
	Signal System	NTSC/PAL	
Video	Input Voltage	12-volt DC or 24-volt DC (can range from 8V~55V DC)	
	Camera Input	Up to 8 cameras	
	Display	8 video window screens	
	Image Quality	8 – Level adjustable	
	Fwd/Playback speed	x2, x4, x12, x1/4	
	Stream Standard	ISO1449	
	Record Resolution	CIF(352x288 PAL, 360x240 NTSC), 1/2 D1 (704x288 PAL, 720x240 NTSC), D1(720x576 PAL, 720x480 NTSC)	
	Image Compression	12.5K-112.5KB/s, 25K-150KB/s	
	Max FPS	200/240 FPS (25/30 FPS/CH at CIF, 12.5/15 FPS/CH at HD1, 6.25/7.5 FPS/CH at D1)	
	Display Res.	TV monitor 704x576 / 720x480pixels(D1), VGA output 720x576 / 704x480pixels (D1)	
	Audio	Audio Input	8 (stereo)
		Audio Output	2 (stereo)
Audio Compression		ATPCM	
I/O Interface	TV-OUT	2 composite outputs with BNC connectors	
	VGA	1(d-SUB 15 pins)	
	LAN	1(Rj-45) 10M/100M Ethernet connector	
	USB	2, support USB OTG Technology (USB2.0)	
	Serial	RS-485 x3, RS-232 x2	
Network	Protocol	TCP/IP	
Alarm	Input	8 input sensors	
	Multi-mode	Auto-reset after power break, auto-alarm when missing signal input, camera cover alarm	
Power Requirement	Ignition Switch	Device operation once ignition power on/auto shutdown delay after ignition power off	
	Power Consumption	Average 15W	
	Power Adapter	8-55V DC. Typical 12V DC @ 5A, 24V DC @ 3A	
Physical Characteristics	Height	2.64"	
	Width	9.94"	
	Depth	7.05"	
	Weight	7.72lbs	
Value-Added Function	Mobile Entertaining	Auto-play advertisements, music, movies	
	Motion Detection	Each channel up to 192 detection zones, sensitivity adjustable	
	Record Mode	Manual, continuous, schedule, event, motion detection and pre-event recording	
Others	HDD	HDD Bay – 1 IDE HDD, FAT32 format	
	Storage Mode	2.5" HDD	
	Time Clock	Built-in clock, perpetual calendar	
	GPS Function	Optional for built-in module with GPS antenna	
	Wireless Communication	EDGE/GPRS/CDMA wireless transmission	
	Data R/W Mode	FIFO	
	Time Synch	GPS time synch/NTP (Network Time Protocol) time synch via network connection	
Environment	Operating Temperature	-45°C - 65°C / -59° - 149°F (W/O HDD), 0 - 65°C / 32 - 149°F (W/ HDD)	
	Relative Humidity	≤80%	
	Vibration Resistance	<2 Grms	
	Shock Resistance	< 1200 Grms	