



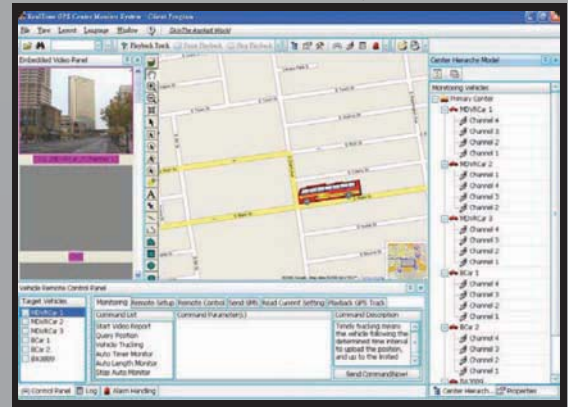
Features

- MPEG-4 Technology for Video Compression
- Compact Flash Card (CFC) for Software Upgrade and Uploading Advertising
- USB Port Allows Laptop Connection to Download & Upload Data
- External EDGE/GPRS/CDMA/WI-FI Module for Wireless Transmission
- Stand Alone NON-PC Embedded Operating System (RTOS) Provides Maximum Stability
- High Quality MPEG-4 Video Recording and Playback at Full Frame Rate (30FPS based on 60Mbps)
- Built-in GPS Allows for Vehicle Tracking and Location Recording in Video Field
- Time Synchronization through GPS or NTP

Analysis Software



Central Monitoring System (CMS)



Remote Monitoring Software (RMS)



Specifications

System	OS	Linux (providing standalone stable operation system)
	Operation Interface	Hand-held, IR controller with on-screen display for all operation of the MDR
	Storage	60, 80, 120 and 160GB (2.5" mobile anti-vibration and shock resistance HDD support)
	Signal System	NTSC/PAL
	Input Voltage	12-volt DC or 24-volt DC (can range from 8V~55V DC)
Video	Camera Input	Up to 4 cameras
	Display	4 video window screens
	Image Quality	8 – Level adjustable
	Fwd/Playback speed	x2, x4, x12, x1/4
	Stream Standard	ISO1449
	Record Resolution	CIF(352x288 PAL, 360x240 NTSC), 1/2 D1 (704x288 PAL, 720x240 NTSC), D1(720x576 PAL, 720x480 NTSC)
	Image Compression	12.5K-112.5KB/s, 25K-150KB/s
	Max FPS	100/120 FPS (25/30 FPS/CH at CIF, 12.5/15 FPS/CH at HD1, 6.25/7.5 FPS/CH at D1)
	Display Res.	TV monitor 704x576 / 720x480pixels(D1), VGA output 720x576 / 704x480pixels (D1)
	Audio	Audio Input
Audio Output		2 (stereo)
Audio Compression		ATPCM
I/O Interface	TV-OUT	2 composite outputs with BNC connectors
	VGA	1(d-SUB 15 pins)
	LAN	1(Rj-45) 10M/100M Ethernet connector
	USB	2, support USB OTG Technology (USB2.0)
	Serial	RS-485, RS-232
Network	Protocol	TCP/IP
Alarm	Input	8 input sensors
	Multi-mode	Auto-reset after power break, auto-alarm when missing signal input, camera cover alarm
Power Requirement	Ignition Switch	Device operation once ignition power on/auto shutdown delay after ignition power off
	Power Consumption	Average 15W
	Power Adapter	8-55V DC. Typical 12V DC @ 5A, 24V DC @ 3A
Physical Characteristics	Height	2.64"
	Width	9.94"
	Depth	7.05"
	Weight	7.72lbs
Value-Added Function	Mobile Entertaining	Auto-play advertisements, music, movies
	Motion Detection	Each channel up to 192 detection zones, sensitivity adjustable
	Record Mode	Manual, continuous, schedule, event, motion detection and pre-event recording
Others	HDD	Removable HDD Bay – 1 IDE HDD, FAT32 format
	Storage Mode	2.5" HDD
	Time Clock	Built-in clock, perpetual calendar
	GPS Function	Optional for built-in module with GPS antenna
	Wireless Communication	EDGE/GPRS/CDMA wireless transmission
	Data R/W Mode	FIFO
	Time Synch	GPS time synch/NTP (Network Time Protocol) time synch via network connection
Environment	Operating Temperature	-45°C - 65°C / -59° - 149°F (W/O HDD), 0 - 65°C / 32 - 149°F (W/ HDD)
	Relative Humidity	≤80%
	Vibration Resistance	<2 Grms
	Shock Resistance	< 1200 Grms