

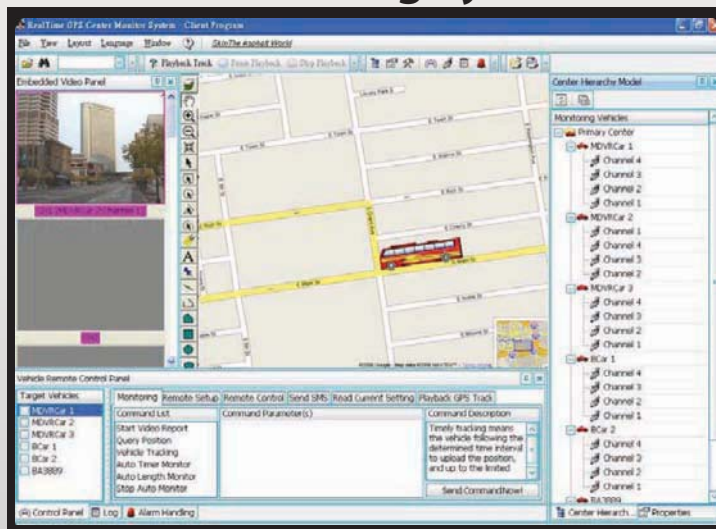


The X1 contains the functionality of a mobile DVR in a unit small enough to fit in your pocket. The X1 provides users with the GPS, metadata, and wireless transmission features found in larger units, but at an affordable price.

Features

- Dual Streaming Transfer Provides Excellent Performance
- Supports Powerful CMS (Central Monitoring System) for Superior Online Viewing/Tracking
- Plug-and-Play from SD Recorded Card, Easy to Playback on PC Side
- Stand Alone NON-PC Embedded Operating System (RTOS) Provides Maximum Stability
- H.264 Wireless Transfer Provides Superior Video Transfer Quality (up to 7-8 FPS based on 60KB/s)
- 1 Channel Video Input and 1 Channel Video Output
- 1-25 FPS Adjustable

Central Monitoring System (CMS)



Specifications

System	OS	Linux (providing standalone stable operating system)
	Operation Interface	Hand-held, IR controller with on-screen display for all operations of the MDVR
	Storage	SD card (Storage is optional but not be less than 1 GB)
	Signal System	NTSC/PAL
	Input Voltage	12V / 1A
Video	Camera Input	1/4 camera
	Display	1/4 video window screens
	Image Quality	8 – Level adjustable
	Fwd/Playback speed	x2, x4, x1/2, x1/4
	Stream Standard	ISO 14969
	Record Resolution	CIF (352x288 PAL, 352x240 NTSC), 1/2 D1 (720x288 PAL, 720x240 NTSC), D1 (720x576 PAL, 720x480 NTSC)
	Image Compression	4.8K-256KB/s
	Max FPS	25/30 FPS (25/30 FPS/CH at CIF, 12.5/15 FPS/CH at HD1, 6.25/7.5 FPS/CH at D1)
	Display Resolution	TV Monitor 720x576 / 720x480 pixels (D1)
	Audio	Audio Input
Audio Output		1 mono
Audio Compression		AMR
I/O Interface	TV-OUT	1 output, 1 input
	LAN	1(RJ-45) 10M/100M Ethernet Connection
	USB	2, support USB Technology (USB 1.0)
	Serial	RS-232x2
Network	Protocol	TCP/IP
Alarm	Input	3 I/O alarm inputs, 3 alarm outputs
	Multi-mode	Auto-reset after power-break, auto-alarm when missing signal input, camera cover alarm
Power Requirement	Ignition Switch	Device operates once ignition power on / auto shutdown delay after ignition power off
	Power Consumption	Average 15W
	Power Adapter	12 V DC. Typical 12 V DC @ 5A, 24V DC@3A
Physical Characteristics	Height	1.85"
	Width	5.83"
	Depth	5"
	Weight	3.3 lbs
Value-added Function	Record Mode	Manual, continuous, schedule, event, pre-event recording
Others	Storage Mode	SD card (storage is optional but cannot be less than 1 GB)
	Time Clock	Built-in clock, perpetual calendar
	GPS function	Optional for built-in module with GPS antenna
	Wireless Communication	EDGE/GPRS/CDMA wireless transmission
	Time Synch	GPS Time Synch
Environment	Operating Temperature	0-65°C (32-149°F)
	Relative Humidity	≤80%
	Vibration Resistance	< 10 Grms