



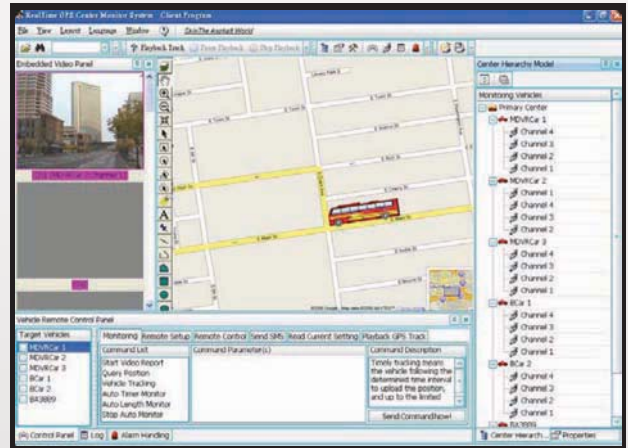
### Analysis Software



### Features

- H.264 video compression standard.
- H.264 Wireless Transfer, provides superior video transfer quality (up to 7-8 fps based on 60kbps)
- Removable HDD
- Stand-alone NON-PC embedded operating system (RTOS) provides maximum stability
- 4 Channels video inputs and 4 channels video outputs
- CDMA module and external EDGE and GPS module
- Supports strong feature in CMS covering remotely live monitoring, alert system and location tracking
- 1-25 fps adjustable
- Perfect for buses and emergency response vehicles

### Central Monitoring System (CMS)



## Specifications

|                      |                        |   |
|----------------------|------------------------|---|
| Physical Foot Print  | Height                 | 66mm (2.6 in)   |
|                      | Width                  | 240.8 mm (9.5 in)   |
|                      | Depth                  | 175 mm (6.9 in)   |
|                      | Weight                 | 5 lb  |
| Value-added Function | Motion Detection       | Each channel up to 192 detection zone, sensitivity adjustable   |
|                      | Record Mode            | Manual, continuous, schedule, event, motion detection and pre-event recording   |
| Others               | HDD                    | Removable HDD Bay – 1 IDE HDD, FAT32 format   |
|                      | Storage Mode           | 2.5" HDD  |
|                      | Time Clock             | Built-in clock, perpetual calendar  |
|                      | GPS Function           | Optional for built-in module with GPS antenna   |
|                      | Wireless Communication | EDGE/GPRS/CDMA wireless transmission  |
|                      | Data R/W mode          | FIFO  |
|                      | Time Synch             | GPS Time Synch / NTP (Network Time Protocol) Time Synch via network connection  |
| Environment          | Operating Temperature  | -40°C - 40°C (w/o HDD), 0-40°C (w HDD) (Below 80% Relative Humidity)  |
|                      | Vibration Resistance   | Up to 2Grms   |
|                      | Shock Resistance       | Up to 1,200G rms  |
| System               | OS                     | Linux (providing standalone stable operation system)  |
|                      | Operation Interface    | Hand-held, IR controller with On-Screen Display (OSD) for all operations of the MDR   |
|                      | Storage                | 60, 80, 120 and 160 GB (2.5 in. mobile anti-vibration and shock resistance HDD support)   |
|                      | Signal System          | NTSC/PAL  |
|                      | Input Voltage          | 12-volt DC  |
| Video                | Camera Input           | Up to 4 cameras   |
|                      | Display                | 4 Video Window Screens  |
|                      | Image Quality          | 8 – level adjustable  |
|                      | Fwd/Playback speed     | x2, x4, x1/2, x1/4  |
|                      | Stream Standard        | ISO14969  |
|                      | Record Resolution      | CIF(352x288 pixels for PAL, 352x240 pixels for NTSC), 1/2D1 (720x288 pixels for PAL, 720x240 pixels for NTSC), D1 (720x576 pixels for PAL, 720x480 pixels for NTSC) |
|                      | Image Compression      | 4.8K-256KB/s  |
|                      | Max FPS                | 25 / 30 FPS (25/30 FPS/CH at CIF, 12.5/15 FPS/CH at HD1, 6.25/7.5 FPS/CH at D1)   |
|                      | Display Res.           | TV Monitor 720x576 / 720x480 pixels (D1)  |
|                      | Audio                  | Audio Input   |
| Audio Output         |                        | 2 (stereo)  |
| Audio Compression    |                        | AMR   |
| I/O Interface        | TV-OUT                 | 2 Composite Outputs with BNC connectors   |
|                      | LAN                    | 1(RJ-45) 10M/100M Ethernet connector  |
|                      | USB                    | 2, support USB Technology (USB1.0)  |
|                      | Serial                 | RS-232x2  |
| Network              | Protocol               | TCP/IP  |
| Alarm                | Input                  | 3 I/O alarm input, 3 alarm outputs  |
|                      | Multi-mode             | Auto-reset after power-break, auto-alarm when missing signal input, Camera Cover alarm  |
| Power Requirement    | Ignition Switch        | Device operate once ignition power on/ auto shutdown delay after ignition power off   |
|                      | Power Consumption      | Average 15W   |
|                      | Power Adapter          | 12 V DC. Typical 12V DC @ 5A, 24V @ 3A  |